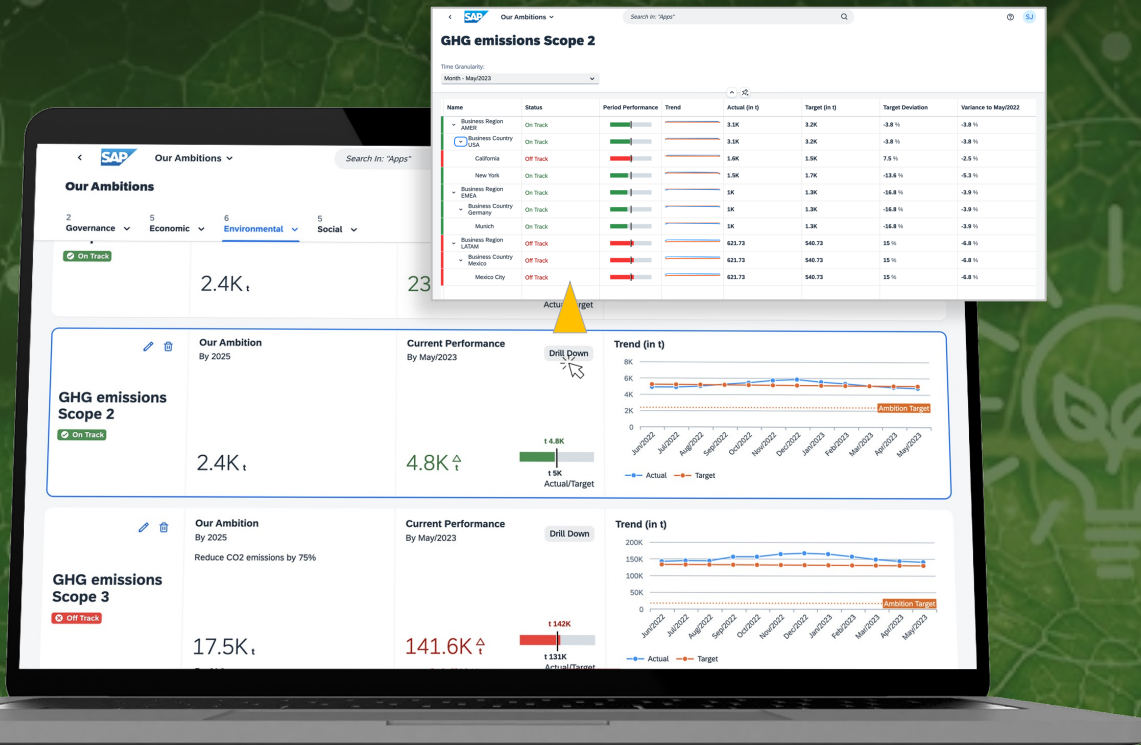


Simplify ESG Reporting with SAP Sustainability Control Tower (SCT)

 **Get up and running in 30 days or less.**



SAP Sustainability Control Tower delivers reporting for standard ESG metrics while providing valuable analytics into performance for continuous improvement toward achieving 2030/2050 sustainability goals.

BTPXpress for SCT accelerates your ESG reporting process

while unlocking key insights into aligning operations with your long-term sustainability goals. The package includes:

- SAP Sustainability Control Tower setup and configuration
- Data analysis and mapping for key ESG metrics from standards such as GRI, TCFD, EU Taxonomy, and more
- Strategic consulting from our sustainability experts for ongoing process improvement



Discovery

Define your ESG requirements to tailor SCT to your business

1 Day



SCT Setup

Configure service in BTP, set up key ESG metrics, upload data

5-7 Days



Sustainability Vision

Strategy workshops to optimize SCT and align with your goals

7-10 Days



SCT Handover

Training to ensure your team maximizes the value of SCT

5-7 Days

BTPXpress for SCT establishes...

- Reliable sustainability data based on actuals not averages
- Sustainability embedded into your business processes
- Trust and transparency with your stakeholders
- Centralized, enterprise-wide sustainability platform

— Your SAP sustainability partner —

For more information or to schedule a discovery session, contact:

Mike Cammarata, mcammarata@linx-as.com, 610-883-6912

