



Accelerate your time to value.



Best Practices



SAP Solution Enhancements



Project Accelerators



Specialized Support



Linx-as

R&D Transformation



OVER TWO DECADES OF SAP EXPERIENCE PACKAGED INTO RAPIDLY DEPLOYABLE BUSINESS SOLUTIONS



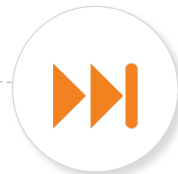
Best-Practice Business Processes

refined over years of project success



SAP Solution Enhancements

fill gaps and improve performance & user experience



Project Delivery Accelerators

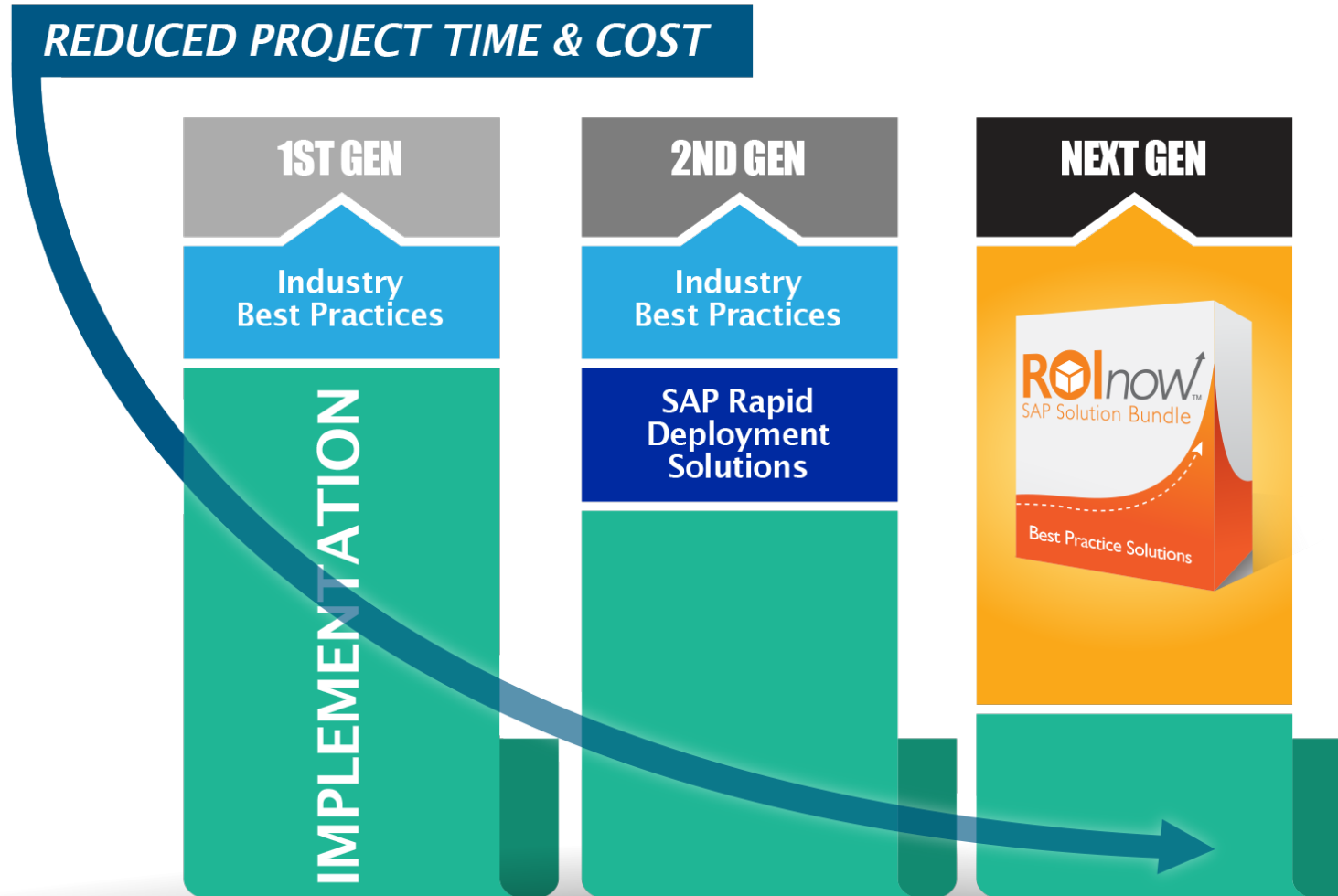
speed implementation time and reduce risk



Dedicated Support

from specialized consultants to ensure your success

ROI NOW DELIVERS A FASTER RETURN ON YOUR SAP INVESTMENT



UP TO

55%

Shrink your project timeline

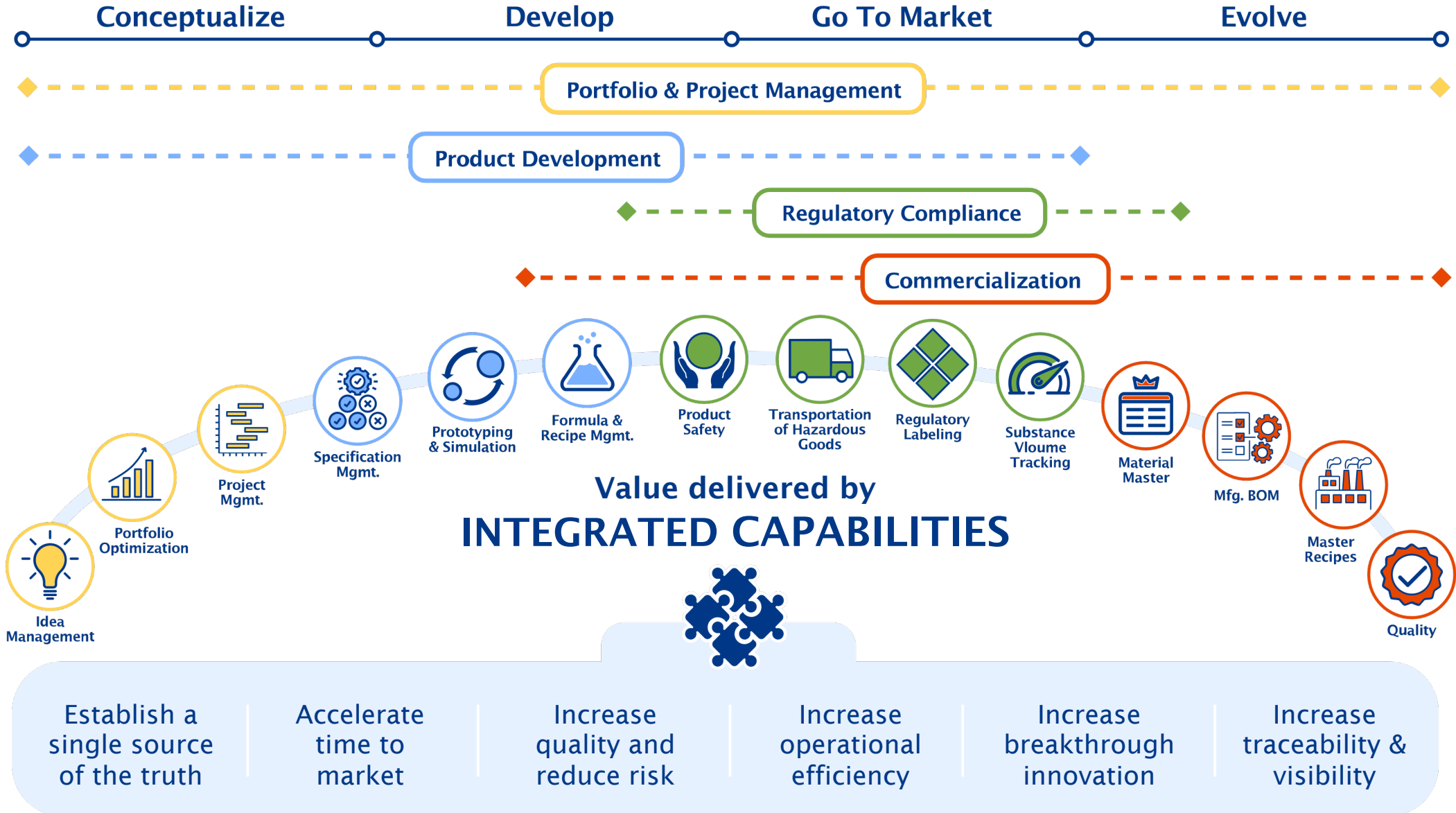
AS MUCH AS

30%

Reduce project delivery costs

Time & cost savings vary based on solution bundle. SAP licenses not included.

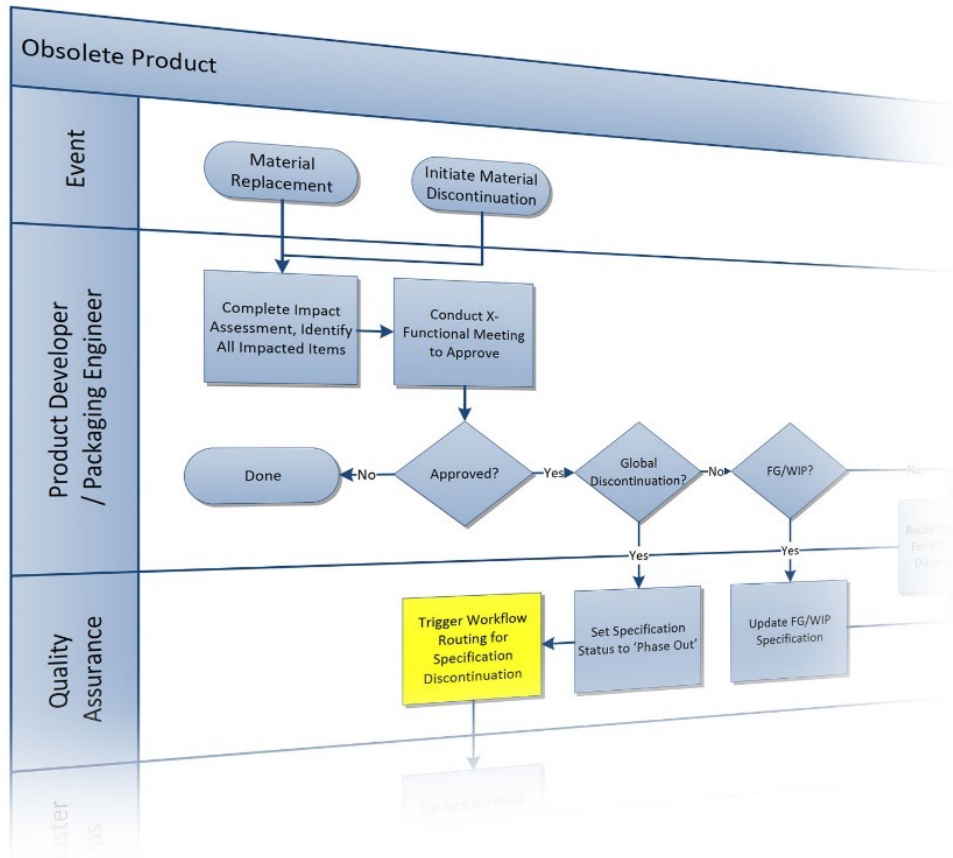
THE LINX-AS BEST-PRACTICE APPROACH TO R&D TRANSFORMATION



ROI NOW FOR R&D TRANSFORMATION: BEST-PRACTICE PROCESSES



Best-practice business processes tested and refined over years of project success



- Role-based business process flows
- Reflecting best-practice PLM business processes
- Facilitates and accelerates standardization of PLM processes for your organization
- Combines business process design with system prototypes using Linx-AS PLM demo systems

ROI NOW FOR R&D TRANSFORMATION: BEST-PRACTICE PROCESSES



- **Manage Specifications**
 - Pure Substances
 - Ingredient/Raw Materials/Compounds
- **Manage Packaging Specifications**
 - Primary Packaging components
 - Secondary Packaging components
 - Supporting specifications (Pallet/Structure/Material) if required
- **Manage Formulas/Recipes**
 - Bulk/WIP Formula Recipes and Specifications
- **Manage Finished Product**
 - FG Recipes and Specifications
- **Manage Labels**
 - Sample labels and product labels
- **Manage Product Change**
- **Manage Product Obsolescence**
- **Handover to Manufacturing:**
 - PLM Recipe to ERP BOM Sync
- **Manage Documents**
 - Controlled and Supporting Documents
 - Contracts/Agreements for Suppliers, etc.
- **Searching, Reporting and Analytics**

**Processes vary slightly by industry*

ROI NOW FOR R&D TRANSFORMATION: SAP SOLUTION ENHANCEMENTS



With over 20 years of experience implementing SAP, common development requirements have emerged. These modular programs and solutions unique to Linx-AS can knock weeks—even months—off of implementation time while enhancing user satisfaction with SAP PLM.

- **Robust Workflow Solution**
engineered on native SAP workflow platform
- **Simplified Product Labeling Functionality**
with enhanced calculations and international templates
- **Integrated Collaboration Platform**
enhanced for process PLM requirements
- **Compliance Content Connector**
for R&D Decision Support
- **WWI Reporting Enhancements**
including multiple templates, symbols for recipes & labels in spec docs
- **SAP PLM Code Library**
for additional development requirements



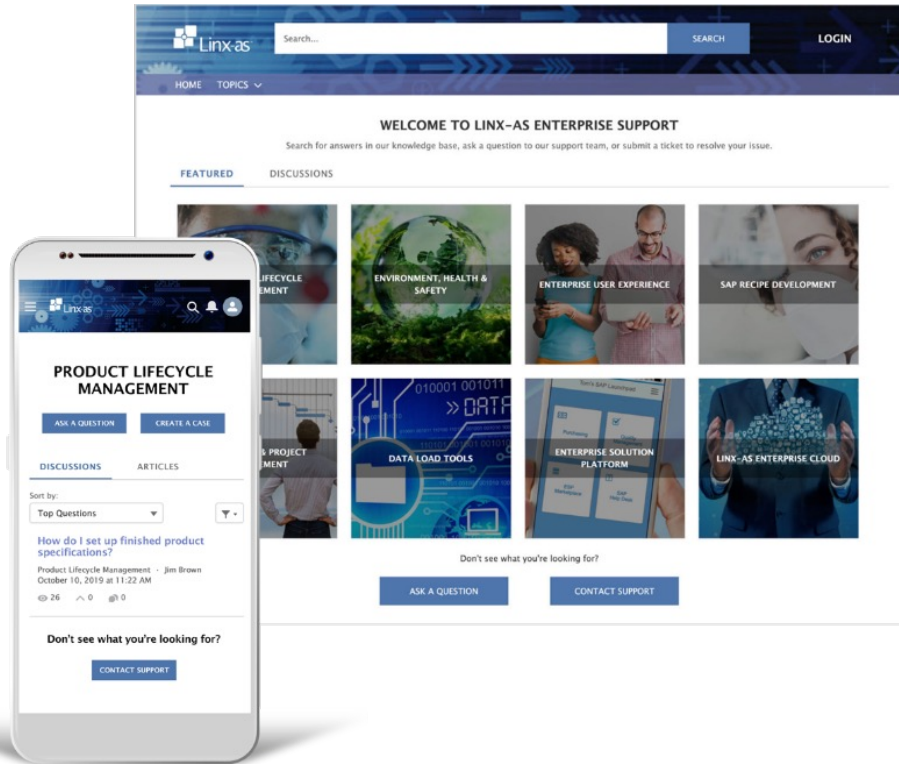
▶▶ *Project Delivery Accelerators to speed implementation time and reduce risk*

- **Accelerated PLM Strategy & Design Methodology**
- **Perfect Project Framework**
 - PLM stakeholder workshop program
 - Requirements gathering models & documentation templates
 - Best-practice system for demos & design sessions
 - PLM project plan templates
- **Proprietary Data Modeling, Configuration & Load Tools**
 - Developed specifically for SAP PLM and SAP Specification Database
- **Detailed user training curriculum and materials**

ROI NOW FOR R&D TRANSFORMATION: SPECIALIZED SUPPORT



Dedicated PLM support for the scope of the ROI Now implementation



- **Back-office specialists are trained & experienced in SAP PLM**
- **Remote client access for post-implementation support**
- **Service portal and knowledge base for management of support issues**

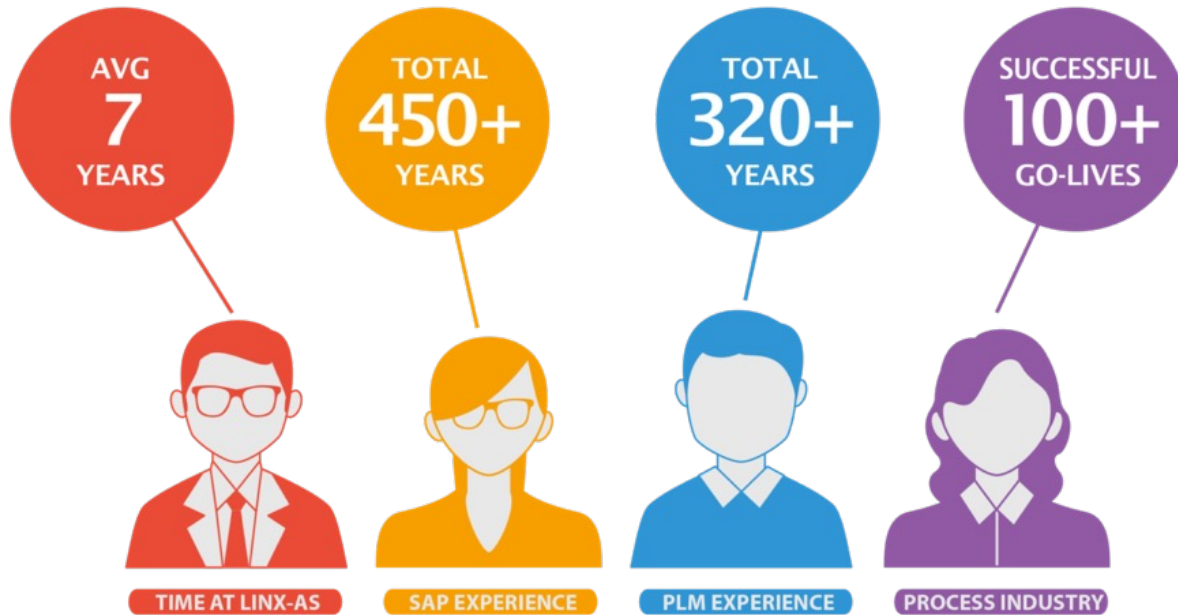
WHY *ROI NOW*?



The benefits of using our *ROI Now* solution :

- **Reduces project risk** by providing out-of-the-box tools and accelerators that reduce the development effort
- Follows **industry best practices** that can be used to facilitate business process design across different entities within an organization
- System walkthroughs drive more **in-depth and robust** business discussions during the design phase
- **Adaptable** to different situations and methodologies

LINX-AS PROCESS INDUSTRY EXPERTISE



- **Expertise accrued in over 20 years of designing and implementing PLM solutions in the process industries**
 - Specification management since late 1990s
 - EH&S/regulatory compliance since late 1990s
 - Recipe management/recipe development since 2004
- **Our implementation approach emphasizes:**
 - Visioning for PLM strategy, road map, business case
 - Industry best-practice business process design focused on driving business benefits
- **Our track record of successful PLM implementations, particularly in the food/beverage industries, is unrivaled**



Linx-as™



HEADQUARTERS

751 Arbor Way
Suite 110
Blue Bell, Pennsylvania 19422
United States



610-992-9333



info@linxas.com

www.linxas.com



@LinxASLLC

Matt Duka

Director, Marketing
610-223-0295
mduka@linxas.com