



ASUG

PLM and the SAP Document Management System

 Linx-as™

 SAP
Partner

- **Introduction**
- **Document Management and SAP PLM**
- **DMS User Interface**
- **Workflow Overview**
- **Demo**
- **Q&A**



- **Introduction**

At Linx-AS, we help customers get the most out of their investment in enterprise technology.

Our success lies in fully understanding the people and processes that drive your business. Only then can we apply our in-depth technical knowledge to design and deliver the right solution.

From streamlining product development to improving corporate sustainability to giving your users access to SAP when, where, and how they want it—we make SAP run like you've never seen.

- **SAP Consulting for Product Lifecycle Management (PLM)**
- **SAP Consulting for Environment, Health & Safety Management (EHSM)**
- **SAP User Experience (UEX) Consulting**
- **Software Innovations**





Innovation Management

Portfolio Management

NPDI Project Management

Product Development

- Recipe Development, Engineering/CAD/Visualization
- Packaging Engineering
- Label/Artwork Management
- Quality Testing
- Vendor Collaboration
- Document Management
- Product Structure Synchronization

Commercialized Product

Lifecycle PDM

Integrated Compliance

- Product Safety & Stewardship • Regulation Management

- Logistics Integration



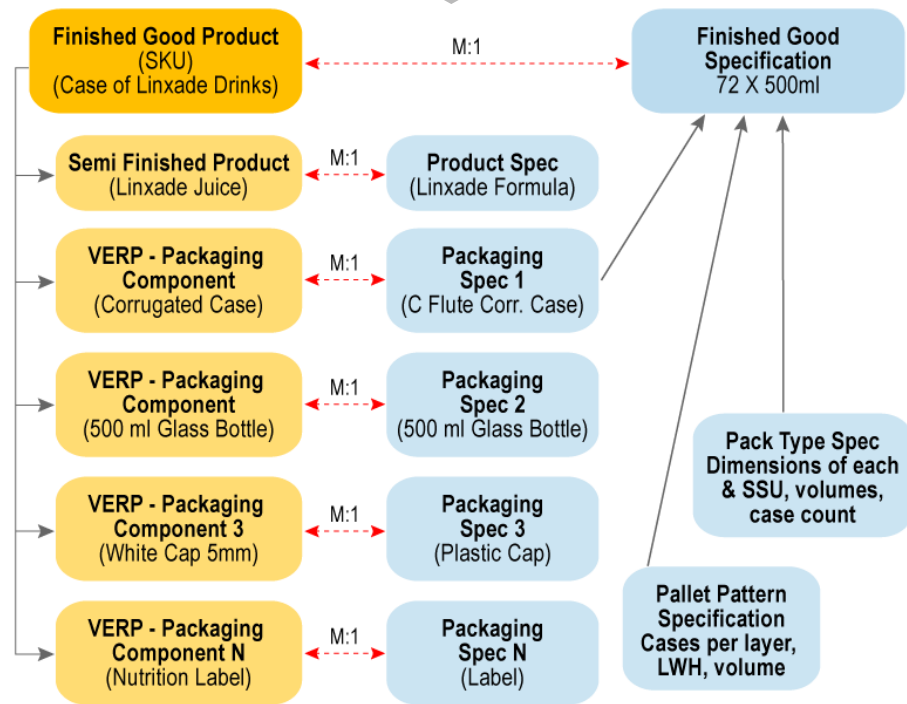
- **Document Management System in SAP**

- **Cross-application component available for all SAP clients as part of core ERP or PLM instances**
- **Very instrumental in any PLM Implementation—both discrete and process PLM applications.**
- **Frequently overlooked as a mature Electronic Document Management System (EDMS) that can meet the requirements for SAP and even non-SAP specific processes**
- **For successful PLM programs, document security, control, and versioning play a critical role.**
- **PLM Implementation projects frequently calls for integration between PLM and external EDMS systems like SharePoint, FileNet, and Documentum without realizing the power of SAP DMS (and its natural integration with many SAP functional areas)**
- **SAP DMS is 21CFR Part 11 certified**

HOW THE CONSUMER SEES A PRODUCT

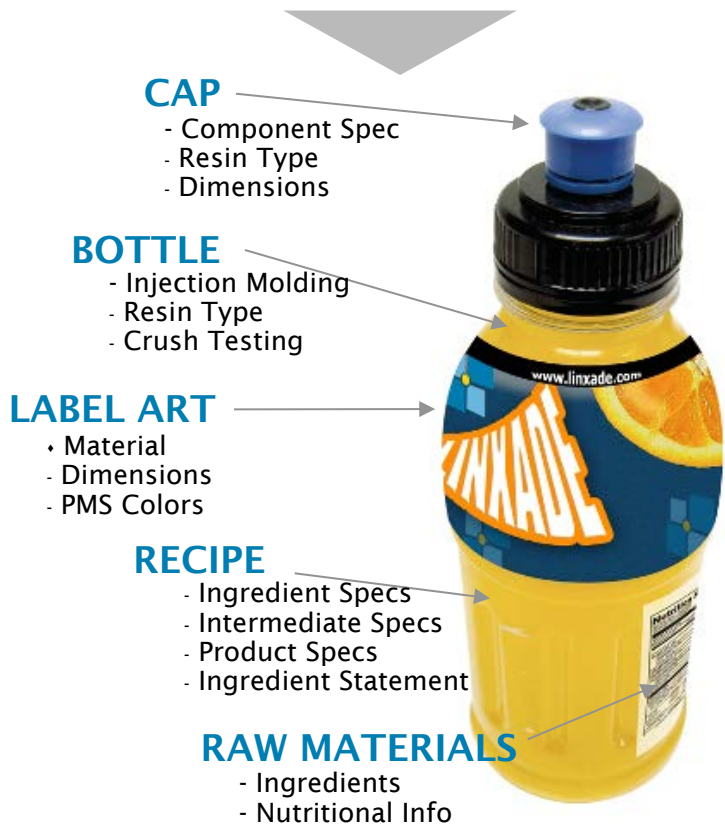


HOW SAP SEES A PRODUCT

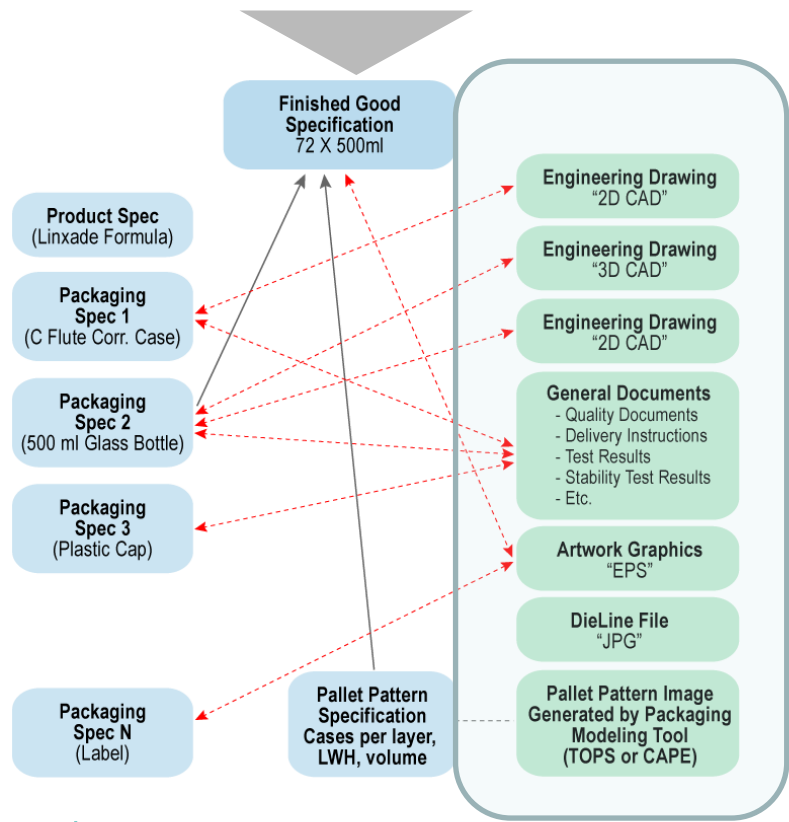




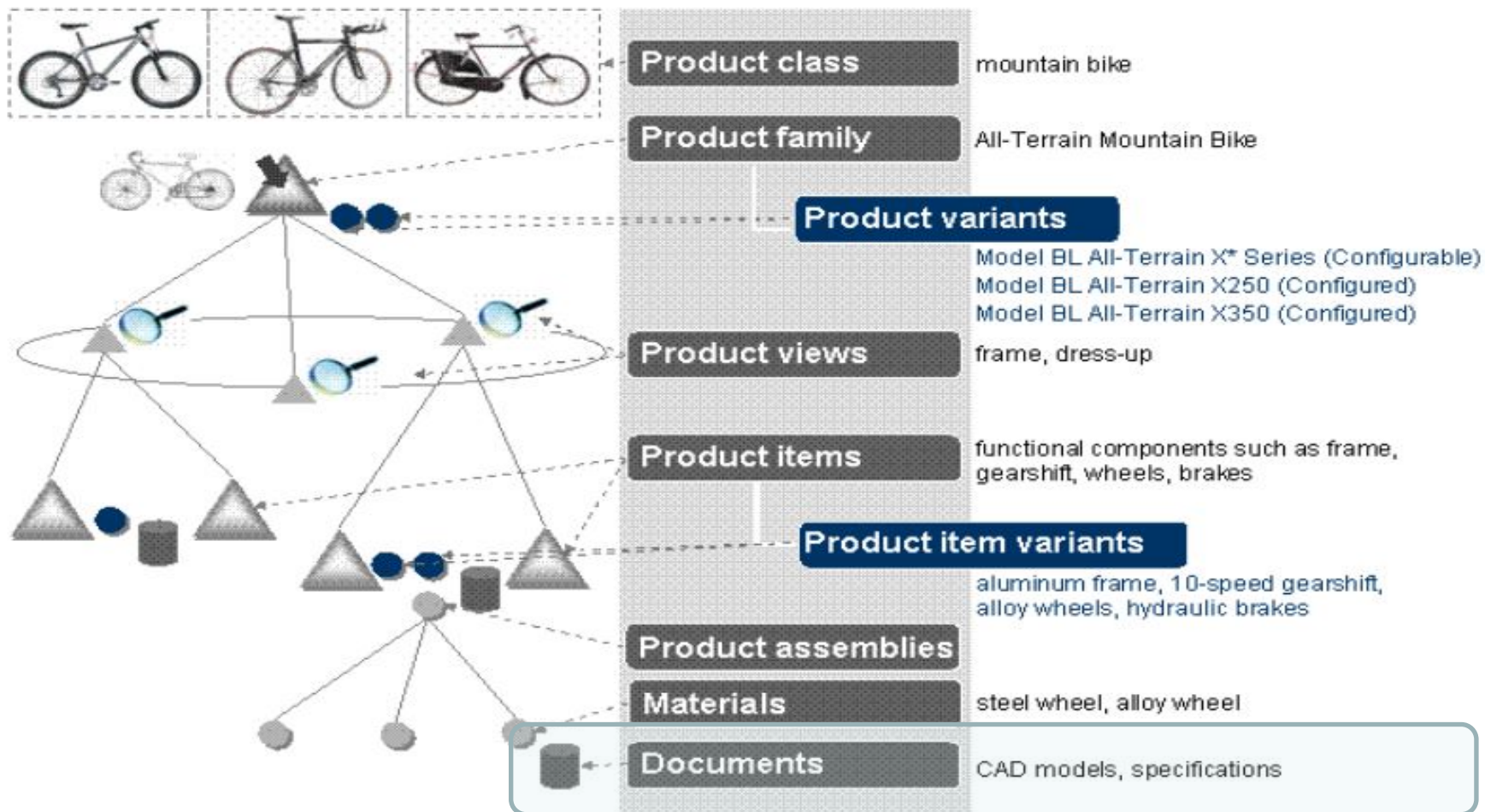
HOW THE CONSUMER SEES A PRODUCT



HOW SAP SEES A PRODUCT



The role of DMS in PLM



Document management solution for structured business and technical documents

• Comprehensive EDMS Solution

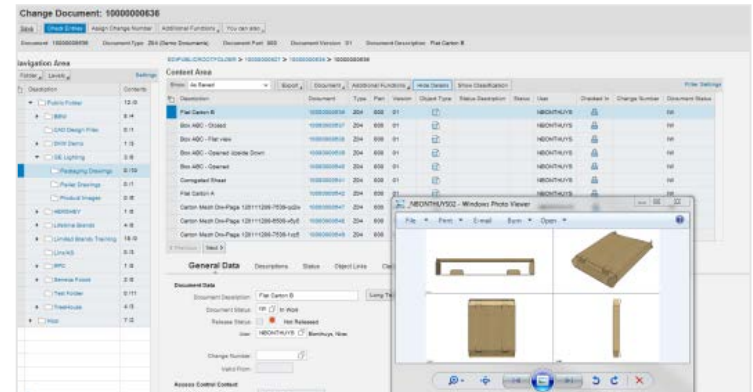
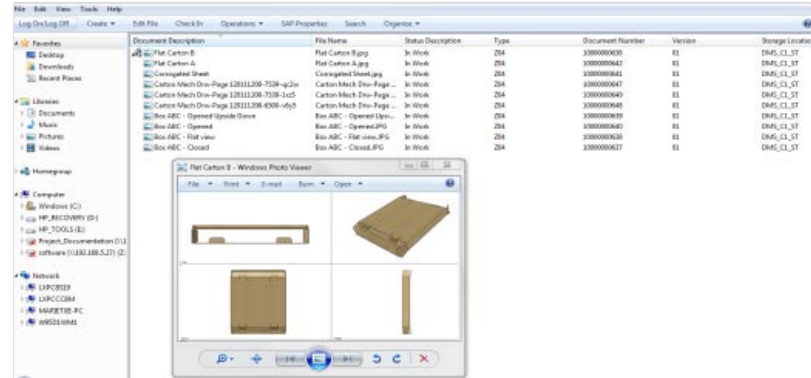
- Versions and Revision Management
- Approval and Change Management
- Workflow
- Distribution (cFolders or Email)
- Check In/Out
- Full Text Retrieval (Enterprise Search)
- Various User Interfaces

• Logistics/Process Integration

- Product Structures
- Project Management
- Logistics

• Open Interfaces

- CAD Integration
- MS Office Integration



Manage Various Document Types

Used to manage all document types within SAP in a controlled environment:

- Procedures
- Design Drawings
- Artwork/Labels
- Video Instructions
- Product Certificates
- Specification Documents (Created by/ from Specification data base)
- SIP/SOP

Application Types

Manage any Windows-based document type:

- MS Office Applications
- Artwork like Adobe Illustrator, EPS, etc.
- CAD Applications (2D & 3D)
- Images like JPG, TIFF, GIFF
- PDF renditions
- Etc.

Integrated Viewer and Redlining

Lightweight Visual Enterprise Viewer allows viewing, redlining and markup of multiple application formats including:

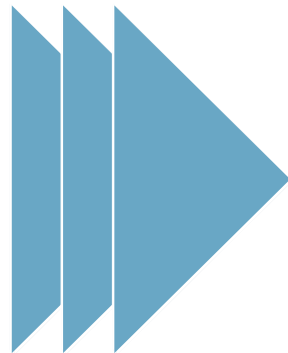
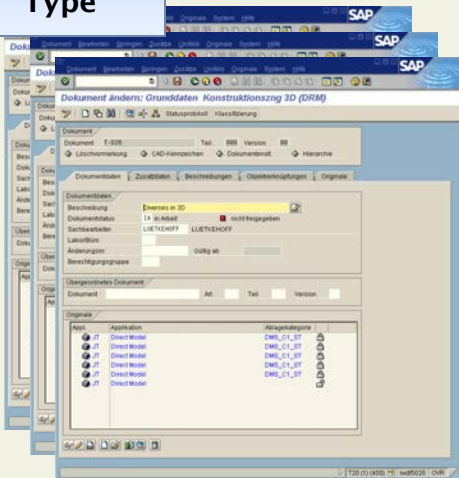
- 2D and 3D CAD Models
- JPEG, TIFF, GIF

SAP Terminology

- **Document Info Records**
 - Master record in the SAP System that contains the meta data (administrative) and control data for all documents in DMS
- **Originals**
 - The "real information," what is actually being stored e.g. Excel files MSWORD file etc.
- **Application**
 - Programs for editing or displaying digitally stored originals such as a CAD applications, graphical images and textual content.
- **Content Server**
 - Secure Storage area where original files can be stored in a separate content server(s) and cache server(s) in a distributed configuration if required

Object Links between DMS and PLM/ERP Objects

By Document
Type



SAP objects

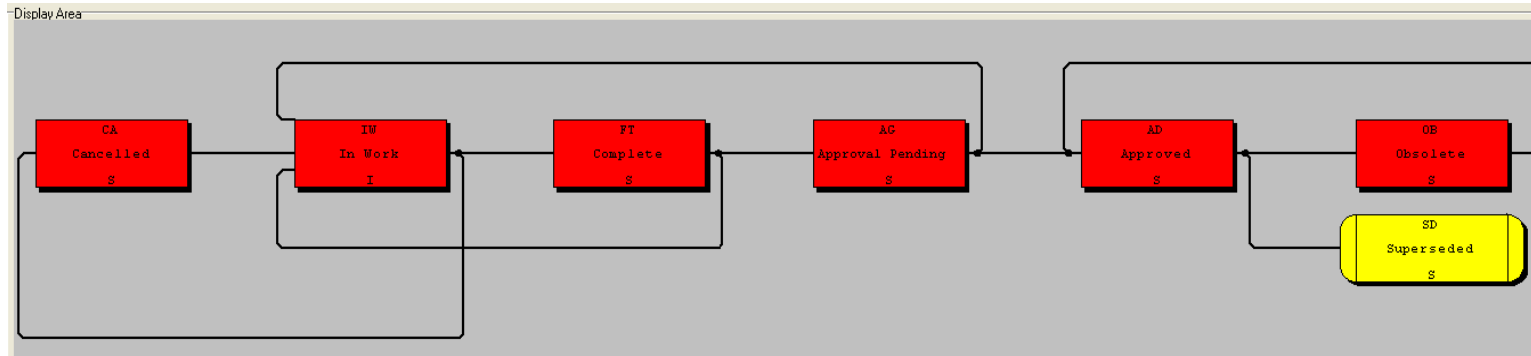
- Material Master
- Specifications and Recipes
- Functional location
- Vendor Master
- Document Info Records
- WBS element
- Production resource
- QM info record
- QM inspection method
- Change number
- Network operation
- Production order
- Customer Master
- Sales receipt item
- Etc.

- n:m links (can be restricted)
- Additional functions can be hidden
- Deletion lock
- Bi-directional Navigation



Document Status Network

- Manage life cycle of documents using status management
- Status networks unique by document type
- Status protects the document against any changes if required
- Status can be set manually or controlled via Workflow
- All status changes on documents are logged by the system (Audit Log)
- Upon approval of a document, the document is generally released for all users with appropriate authorizations
- Support Digital Signatures by Document Type and Status - triggered by status change or Workflow
- Authorizations defined by document type, status and other attributes



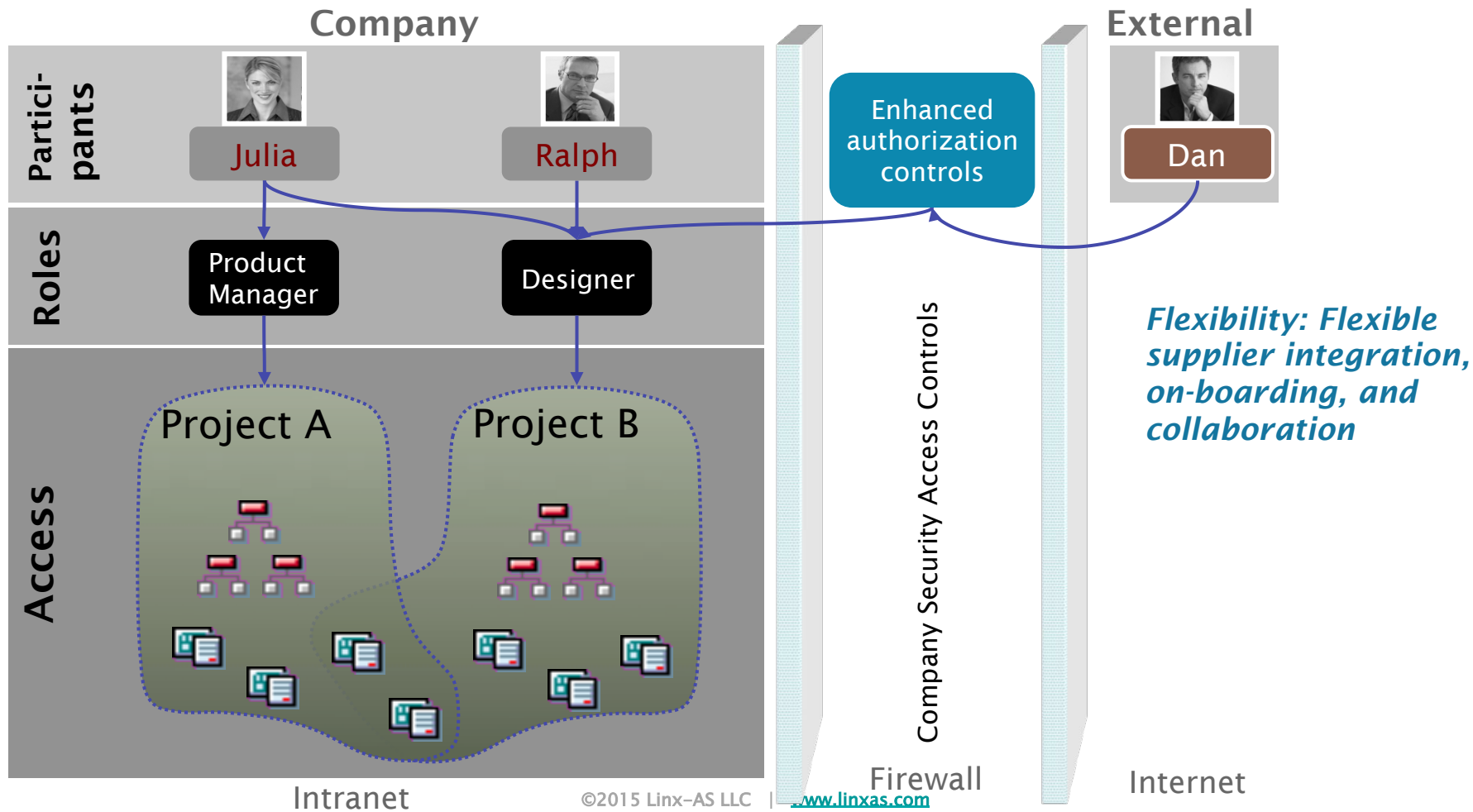
Enterprise Search

- **Enterprise Search enabled for many PLM and non PLM objects:**
 - Documents
 - Specifications
 - Recipes
 - Material Masters
 - BOMs
 - Projects
 - Etc.
- **DMS**
 - Searching on all standard fields, custom fields (Classification) and also document content (Textual content)

Security

- **ABAP Security**
 - Allows the setup of access to groups of documents based on Document Type and/or Document Status, Authorization Group as well as object link type
 - Typically a SAP Security Group function and not accessible to DMS users and/or DMS administrators
- **ACL (Access Control List)**
 - Allows document specific security setup (as well as folders) by DMS Administrator; Write, Read, Create, Delete and None (No Access)
 - Accessible in SAPGUI, WEBUI and EasyDMS
 - Can be setup and adjusted by document/folder by the administrator of the document and/or folder
- **ACM (Access Control Management)**
 - Individual documents (in conjunction with other PLM objects) can be restricted for access to groups of users for purpose of working on joint projects (Refer to next slide)

Access Control Management (ACM)



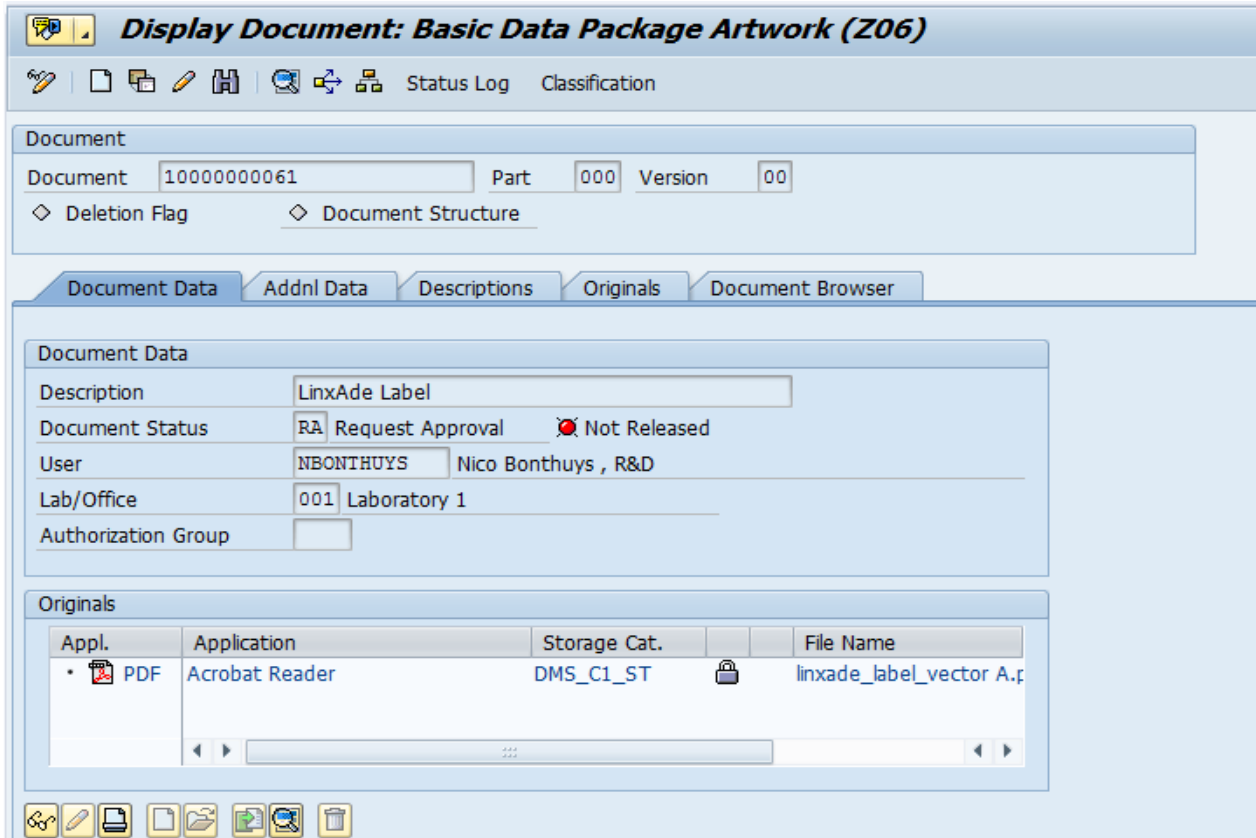
Office Integration

- **Supports embedding of SAP DMS meta data attributes into MS Office documents**
 - Typically used for MSWORD and MSEXCEL applications
 - Support all standard DMS meta data
 - Support DMS classification (custom) data
- **Technology Used**
 - OLE2- Enabled desktop applications like MS Word or MS Excel:
 - LINK-SERV (Link Server Technology)
 - FORM_INF (File Properties Technology)



- **DMS User Interfaces**

- **SAP GUI**
- **SAP EasyDMS**
- **WEBUI SAP NetWeaver Business Client (NWBC)**
- **SAP Engineering Control Center**



Display Document: Basic Data Package Artwork (Z06)

Document

Document: 10000000061 Part: 000 Version: 00

Deletion Flag Document Structure

Document Data Addnl Data Descriptions Originals Document Browser

Document Data

Description: LinxAd Label

Document Status: RA Request Approval Not Released

User: NBONTHUYS Nico Bonthuys, R&D

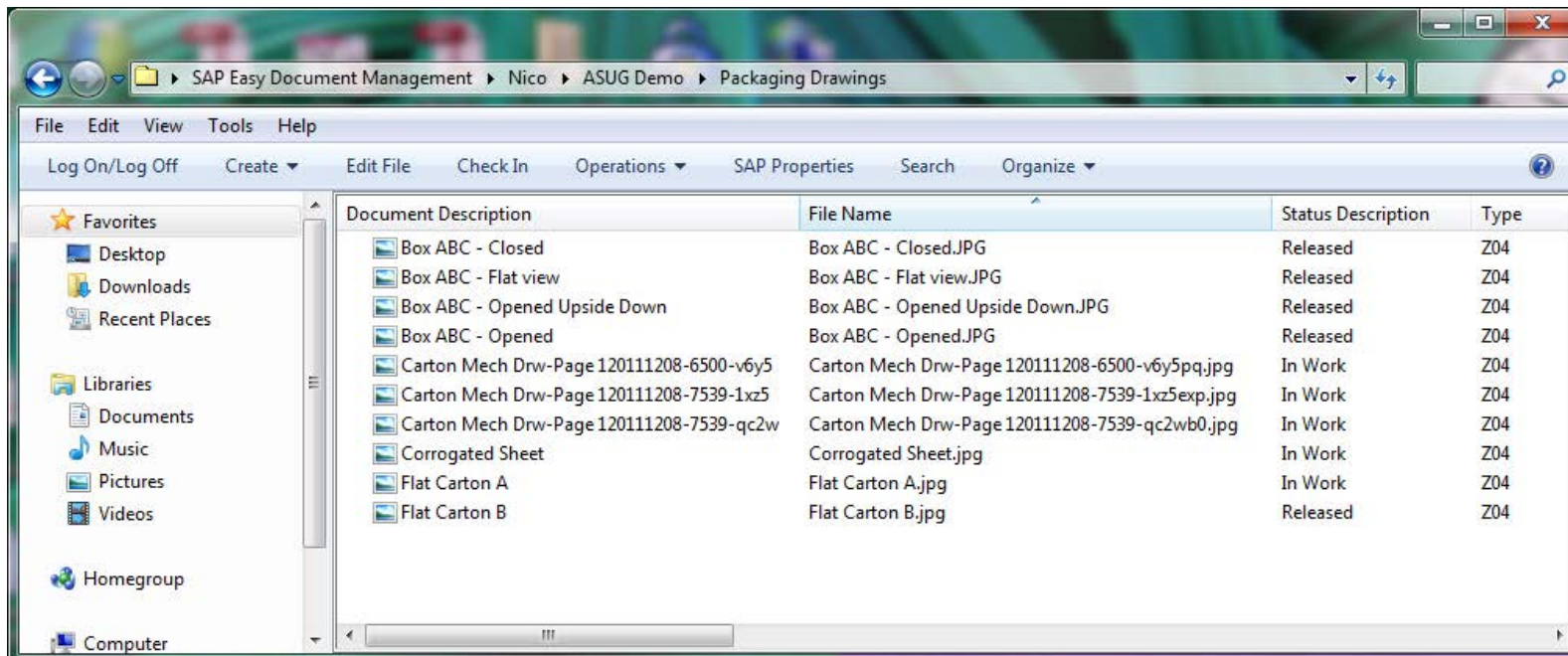
Lab/Office: 001 Laboratory 1

Authorization Group:

Originals

Appl.	Application	Storage Cat.	File Name
PDF	Acrobat Reader	DMS_C1_ST	linxade_label_vector A.r

- SAP DMS was available via the traditional SAPGUI since very early SAP releases (as far back as release 3.1)
- Majority of the DMS functionality is available using the SAPGUI
- SAPGUI still supported on latest EhP7
- Typically preferred by users that spends the majority of their time on SAP Logistics (SAPGUI)



- Based on MS Explorer but connects to SAP DMS via SAP user login
- Supports drag and drop from email and file folders to EasyDMS
- Typically for roles that do not use SAP on a regular basis but need to access or store documents in SAP DMS

Navigation Area

Folder Levels Settings

Description	Contents
Public Folder	11 / 0
Nico	8 / 2
ASUG Demo	6 / 0
Die Lines	0 / 2
Labels	0 / 3
Packaging Drawings	0 / 10
Pallet Drawings	0 / 1
Product Images	0 / 6
Test Folder	0 / 1
BB	0 / 1
CTY	1 / 0
GI	1 / 0
HSY	2 / 0
MC	1 / 1
NBDossier 1 Test	3 / 1
Prototype Documents	0 / 2

Content Area

10000000627 > 10000000635 > 10000000636

Show: As Saved Export Document Additional Functions Hide Details Show Classification

Description	Document	Type	Part	Version	Object Type	User	Checked In	Change Number	Docum
Flat Carton B	10000000636	Z04	000	01		NBONTHUYS			RE
Box ABC - Closed	10000000637	Z04	000	01		NBONTHUYS			RE
Box ABC - Flat view	10000000638	Z04	000	01		NBONTHUYS			RE
Box ABC - Opened Upside Down	10000000639	Z04	000	01		NBONTHUYS			RE
Box ABC - Opened	10000000640	Z04	000	01		NBONTHUYS			RE
Corrugated Sheet	10000000641	Z04	000	01		NBONTHUYS			IW
Flat Carton A	10000000642	Z04	000	01		NBONTHUYS			IW
Carton Mech Drw-Page 120111208-7539-qc2w	10000000647	Z04	000	01		NBONTHUYS			IW
Carton Mech Drw-Page 120111208-6500-v6y5	10000000648	Z04	000	01		NBONTHUYS			IW
Carton Mech Drw-Page 120111208-7539-1xz5	10000000649	Z04	000	01		NBONTHUYS			IW

< Previous Next >

General Data Descriptions Status Object Links Classes Characteristic Values Originals Processing Authorizations

Document Data

Document Description: Flat Carton B Long Text

Document Status: RE Released

Release Status: 02/21/2015-12/31/9999

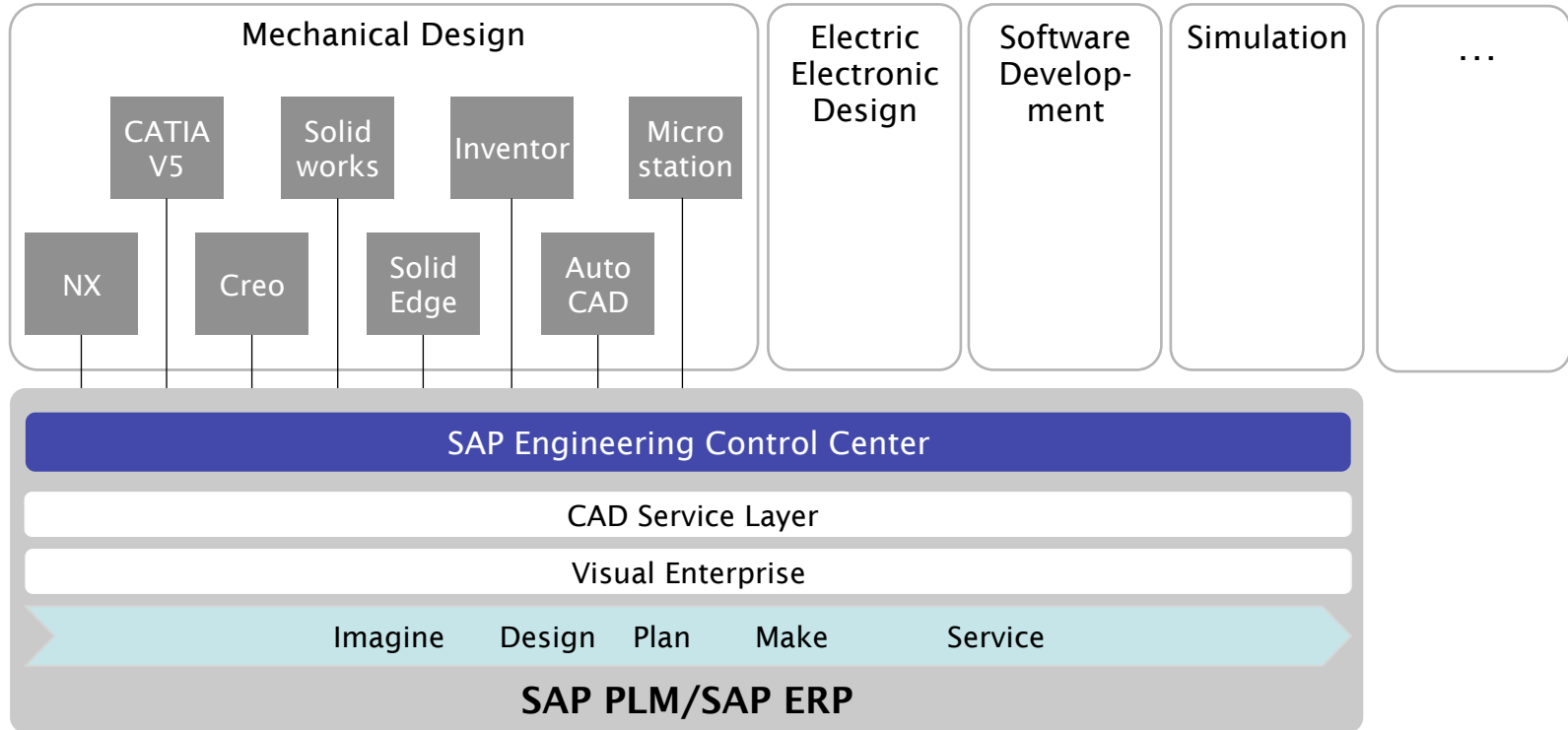
User: NBONTHUYS Bonthuis, Nico

Document Structure:

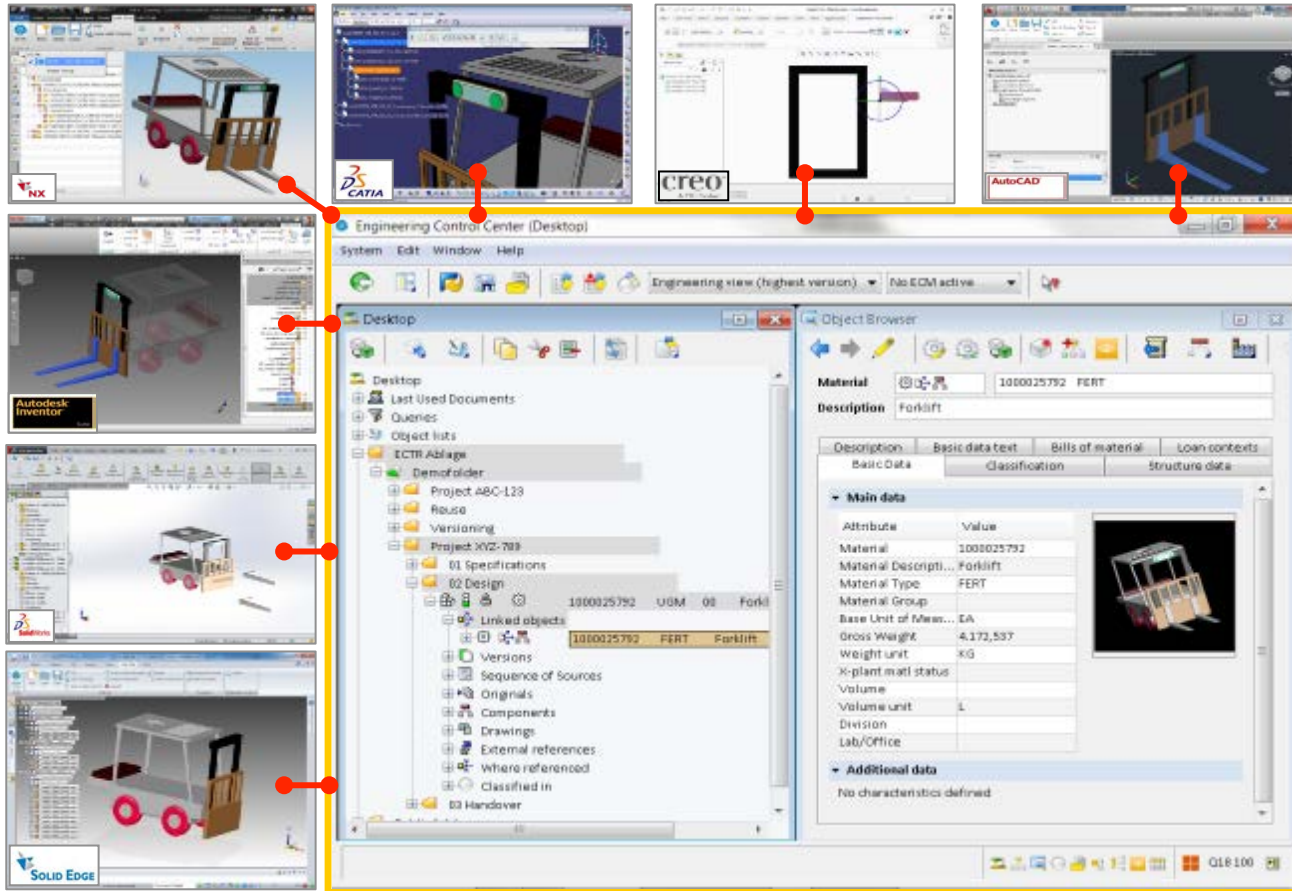
Marked for Deletion:

- Available via NWBC for HTML, NWBC or Portals
- Support all DMS functionality with additional functionality e.g. Document Browser
- Additional functionality introduced; mass downloads, mass copy, favorites, etc.
- Typically for roles in R&D, Packaging & Design Engineering etc.

SAP's Authoring Tool Integration Strategy



SAP Tool Integration Strategy (Overview)



- Efficiency in engineering
- Transparency with holistic product description
- Reduced operating costs



- **DMS Workflow**

- **SAP offers different options for executing Workflows, which can be used to support:**
 - Notifications to route DMS documents to various users/departments (Informal Notifications) for display purposes only
 - Workflow notifications to users to maintain meta data or original content on a document (Collaborative Design Workflow)
 - Workflows to users to review/approve a DMS document (Approval Workflows)
- **The complexity of the business requirements will drive the type of DMS workflow solution; Options are:**
 1. Process Routes which are ad-hoc workflows/notifications associated with a DMS documents and other PLM objects like Change Records
 2. Advanced SAP Business Workflow solution to develop more complex and powerful workflow processes to support more complex Collaborative Design and Approvals

Option 1 : Process Routes (Ad Hoc Workflow)

Display Document: 1000005887

Document: 1000005887 | Document Type: SWA (Engn/Des. Drawing) | Document Part: 000 | Document Version: 00 | Document Description: Servomotor

Buttons: Save, Edit, Print, Refresh, Additional Functions

Navigation: General Data, Descriptions, Object Links, Classes, Characteristic Values, Originals Processing, Document Browser, Authorizations, **Process Route**

Document Data

Document: Servomotor | Long Text

Document Status: Change Request | Authorization Group:

Release Status: Not Released | Created in CAD:

User: BHRETJ | Biret, Julie | Document Structure:

Change Number: | Marked for Deletion:

Valid From: | CM Relevance:

Access Control of Content

Owning Context: DEMO_CTX | Context for demo

[View Original](#)

Display Document: 1000005887

Document: 1000005887 | Document Type: SWA (Engn/Des. Drawing) | Document Part: 000 | Document Version: 00 | Document Description: Servomotor

Buttons: Save, Edit, Print, Refresh, Additional Functions

Navigation: General Data, Descriptions, Object Links, Classes, Characteristic Values, Originals Processing, Document Browser, Authorizations, **Process Route**

Expand All | Collapse All | Show Details | Additional Functions | Settings

Process Tasks	Type	Activity	Status Icon	Status	Long Text	Latest End Date	Latest End Time	Processing Time (Days)
▼ Header							00:00:00	0
• Huber, Daniel	SAP User	Display	△	Work Item Sent	Display		00:00:00	2
▼ Parallel Steps							00:00:00	0
• Choudhary, Manik	SAP User	Display					00:00:00	0
• Huber, Daniel	SAP User	Display					00:00:00	3
• P, Abhilesh	SAP User	Display					00:00:00	0

Buttons: Save, Edit, Print, Refresh, Additional Functions

- Process Routes Embedded ad-hoc workflow functionality of many SAP PLM objects
- Define individual ad hoc workflows or load from workflow templates as an end user
- Notifies recipient of task to complete
- Users can be added in parallel or sequentially
- New Process Routes can be defined by users and do not require a technical resource

Workflow Accelerator

Artwork Z02/1000000524/03/000 - Marketing - A - Approval Request

Actions

Save Changes | Open Document | Approve | Reject | Close [Instructions](#)

Document

Document Type: Z02 | Artwork
Document: 1000000524
Doc. Version: 03
Document Part: 000


Initiator Note


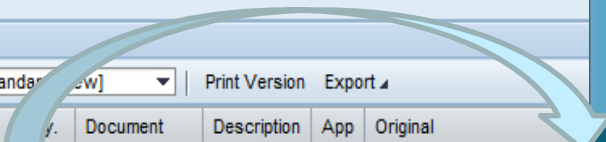
Document data

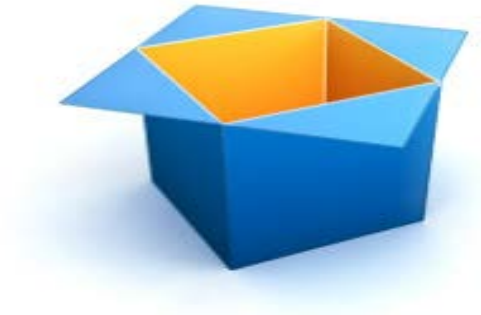
User: NBONTHUYS | Nico Bonthuys
Description: LinxAde Vector Label Drawing # 002
Status: PA | Pending Approval

Originals

View: [Standard View] | Print Version | Export

Display	Doc. No.	Document	Description	App	Original
	Z02	1000000524	Artwork	PDF	C:\Users\NBONTH~1\AppData





Demo



- SAP GUI with Office Integration
- SAP EasyDMS with Drag and Drop
- WEBUI (With Enterprise Search)
- Enterprise Visualization **
- SAP Engineering Control Center
 - ECTR User Interface
 - CAD Integration



Sustainable Product Innovation with SAP PLM

Solutions for Discrete Manufacturers

Thursday, June 18, 1:00 PM ET

Register at www.linxas.com/plm/



Linx-as™

Contact:

Nico Bonthuys

Director, Process PLM
610-761-4619

nbonthuys@linxas.com

Klaus Brettschneider

Director, Discrete PLM
215-917-9720

kbrettschneider@linxas.com

HEADQUARTERS:

721 Arbor Way
Suite 140, Hillcrest II
Blue Bell, Pennsylvania 19422
United States

phone: 610-992-9333
fax: 610-992-9338
email: info@linxas.com

South Africa:

Verona Office Park Unit 4
Cnr Malibongwe & MacArthur Str
Robindale, 2194
South Africa

www.linxas.com